

Windpark at Mount Panachaiko, Greece

Presented by Peter Kadar
peter.kadar@kvk.uni-obuda.hu
02.07.2010.-04.07.2013
Patra Summer University



Mount Panachaiko from Rio











The bridge is too far...



In operation



Under construction



Under construction



Tower parts





The broken metering tower



The new wind speed
metering tower (60 m)



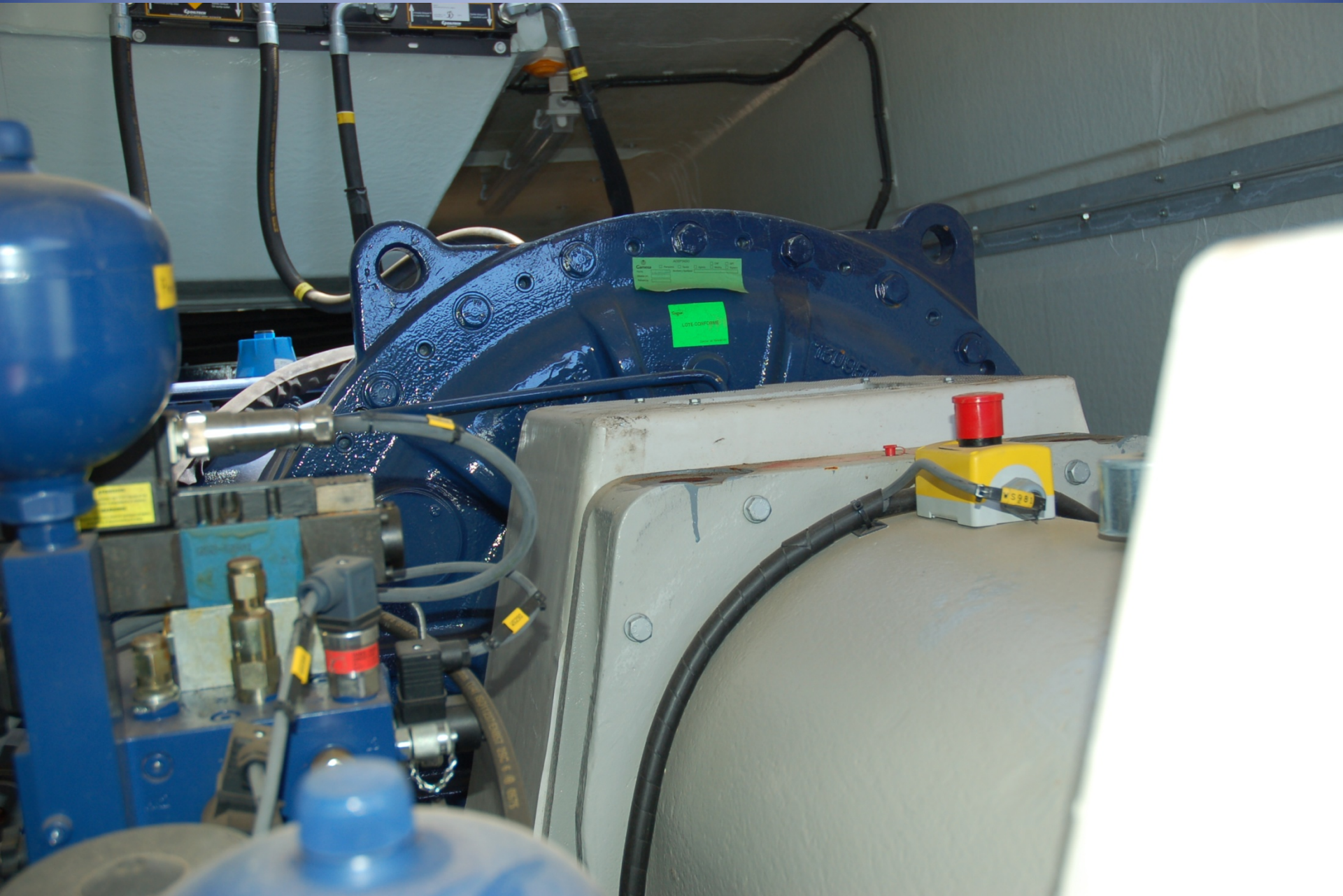
Generator case



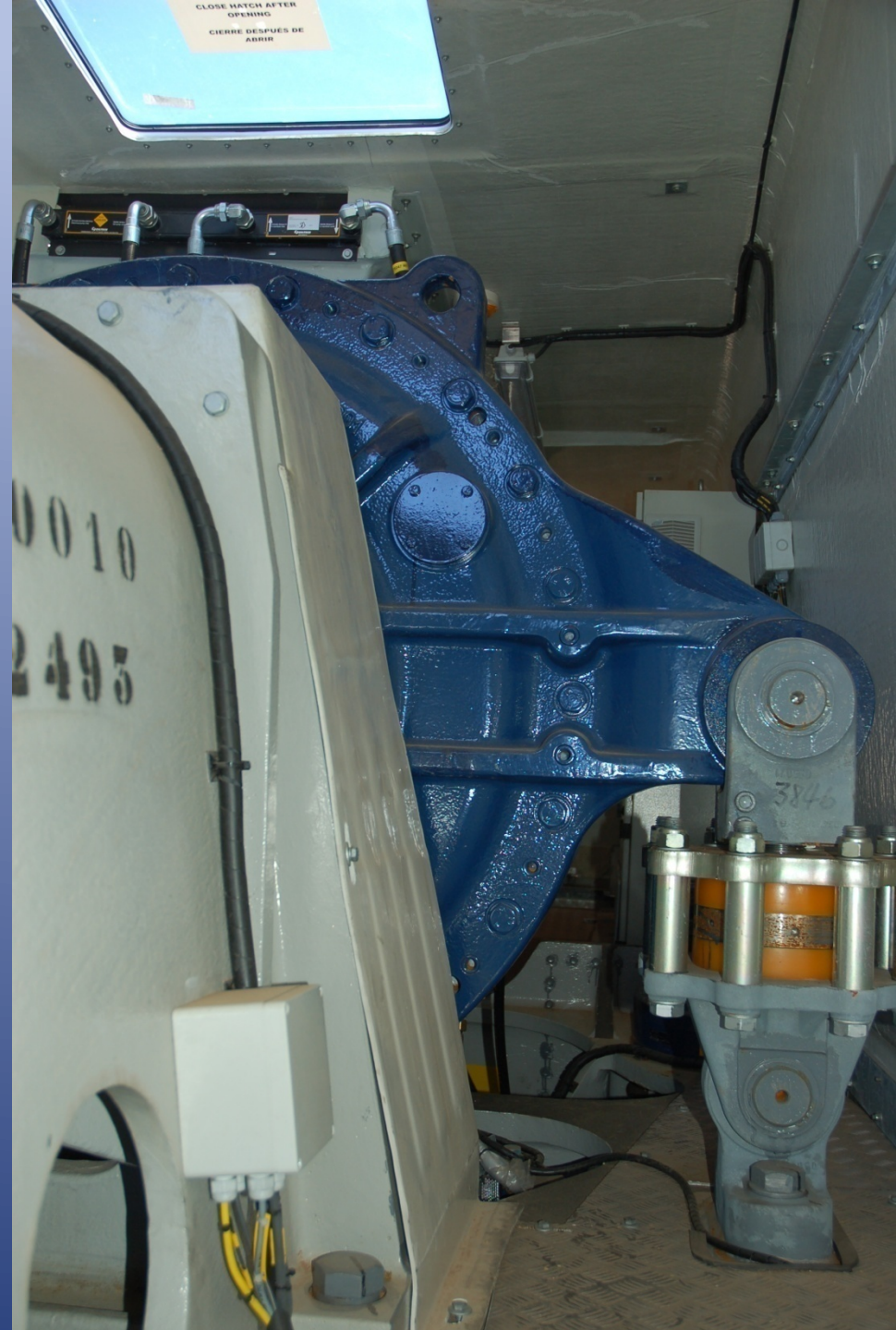
ATENCIÓN
AL MANTENIMIENTO

1. Características:
NUMERO DE SERIE: 100 101 001
CLIENTE: CESA
PAISAJE: PANAMA
D.E. DE GARANTIA: 100 101 001
ESTADO: 100 101 001
REFERENCIA: 100 101 001
ALTIMA DE TURNO: 10 101

The gearbox



Suspension of the gearbox



The generator case



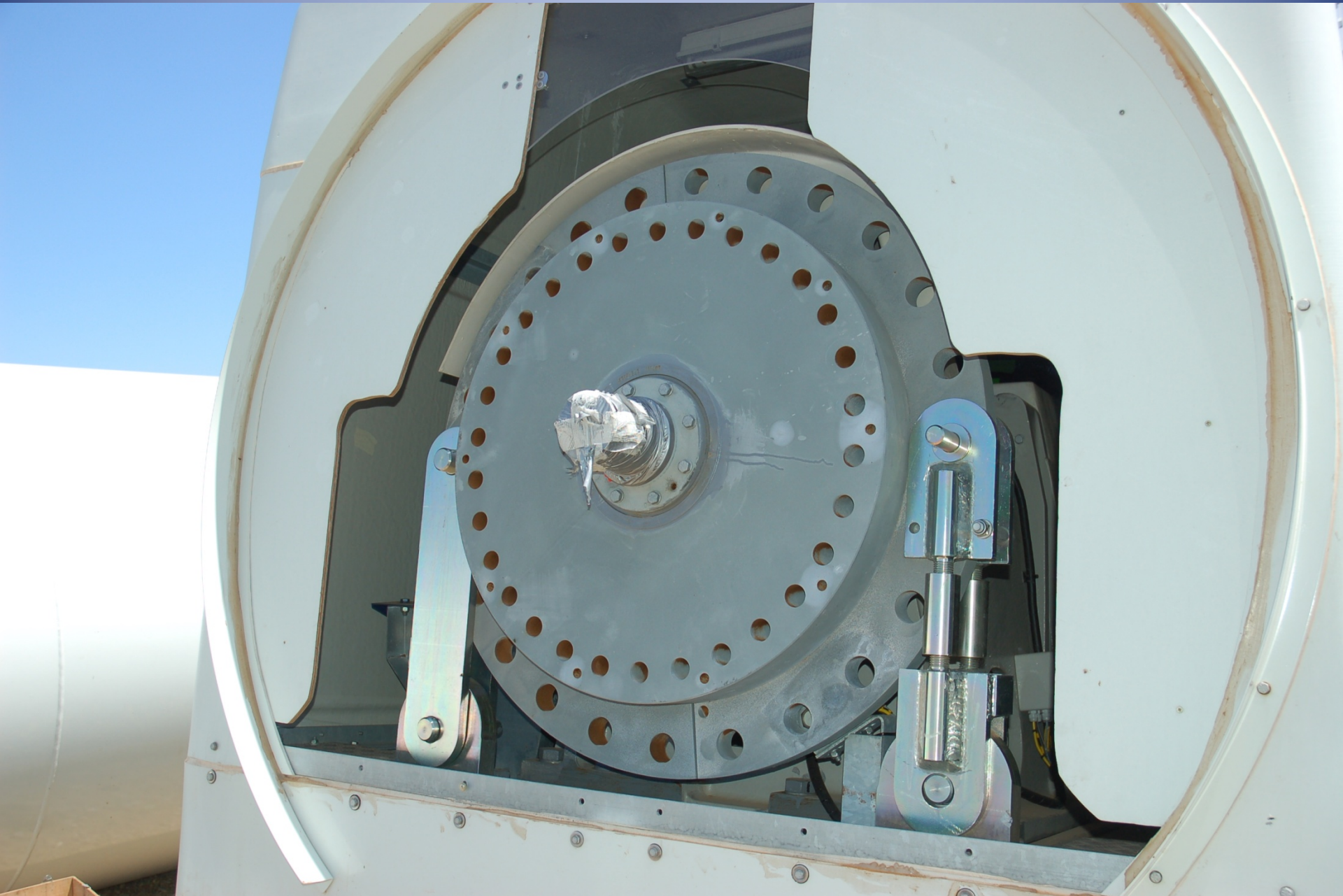
Axe cap



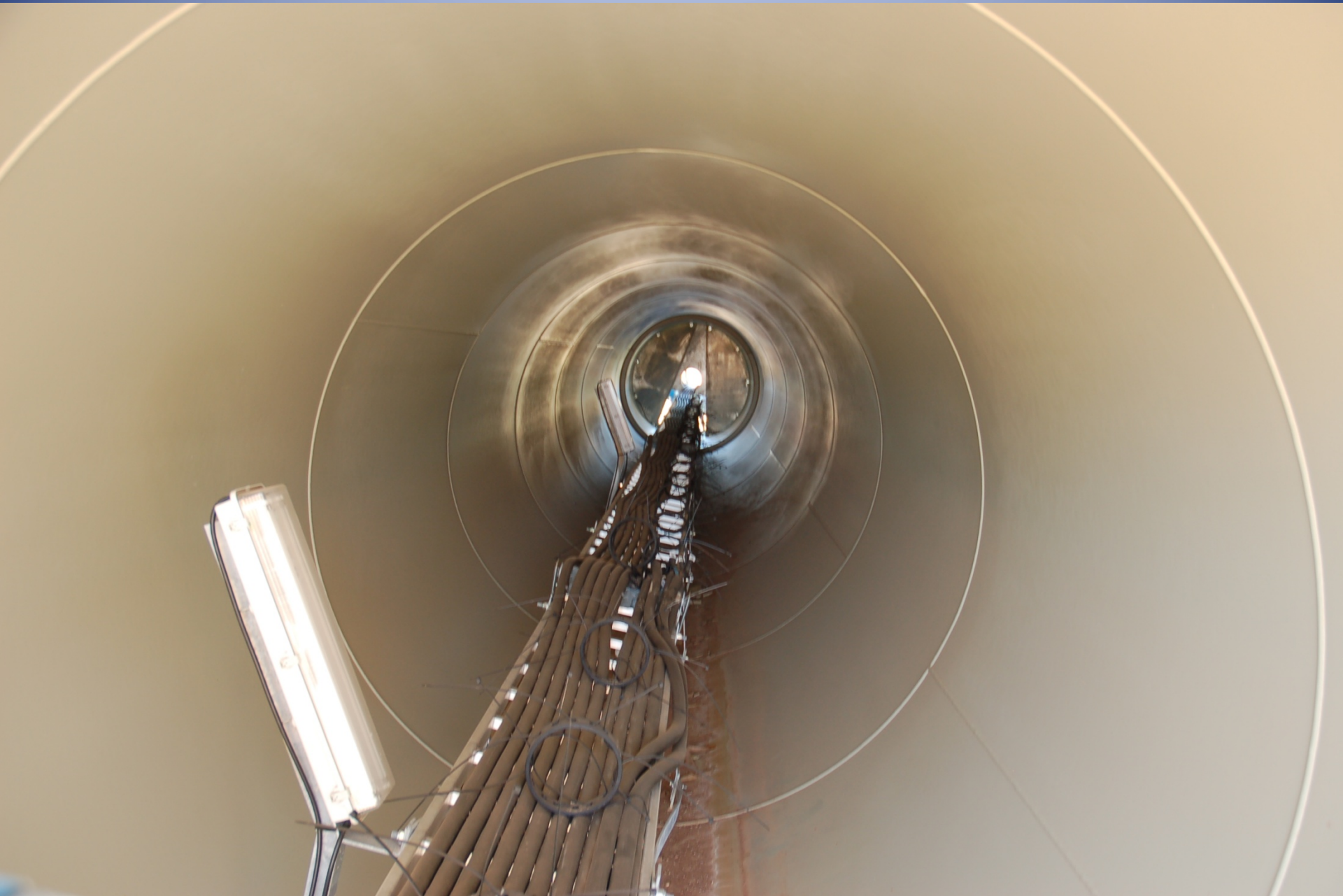
Axe central element



The axe



Tower – 55 m



One of the three elements



Visitors I.



Visitors II.



Rotor blade carrier cage – rotor diameter 52 m



Cable tube



Gamesa G52 cca. 800 kW



Ready to start



In operation





Tourists



The bridge is too far yet...



Windpark on Taigetos Mountains

